

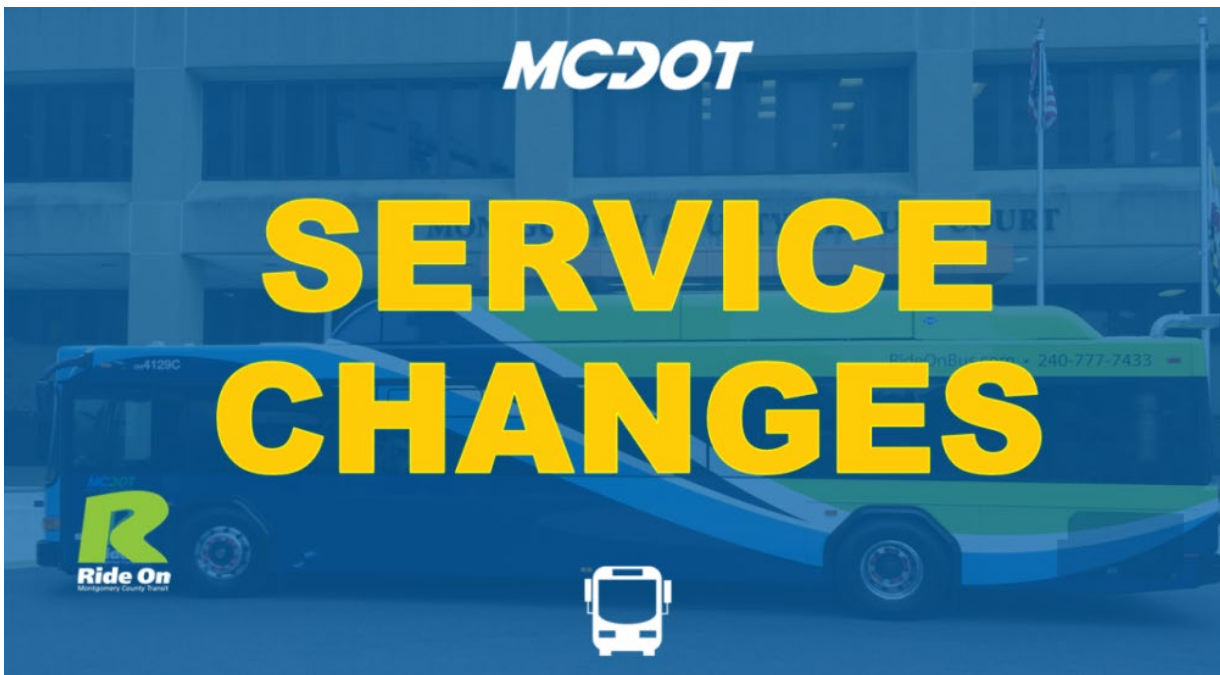


Ride On Newsletter

August 2024

Ride On Bus Service Changes on Sunday, September 8, 2024

The Montgomery County Department of Transportation (MCDOT) will adjust 23 Ride On bus route schedules and add two new high frequency limited stop routes starting Sunday, September 8, to improve efficiency and on-time performance. Although service levels are staying relatively the same, the changes reflect a shift of resources to allow for more reliable service where there is higher demand. The new schedules will be available at rideonbus.com and in print.



Route Changes Include:

- Twenty-three (23) routes have timetable changes: [12](#), [13](#), [14](#), [16](#), [19](#), [20](#), [25](#), [43](#), [57](#), [58](#), [61](#), [63](#), [64](#), [66](#), [67](#), [73](#), [74](#), [75](#), [83](#), [97](#), [98](#), [100](#), [101](#)
- Three routes have a slight map change: [43](#), [63](#), [66](#)
- Two routes have slight routing changes with no map or timetable changes: [56](#), [301](#)
- Two new routes: [Ride On extRa Pink](#) & [Lime Routes](#)

Here are details of each route affected:

- [Ride On extRa Pink Route](#): New high frequency limited stop service
 - Links the Shady Grove Road corridor with the Life Sciences Center via Medical Center Drive
 - Runs every 10 minutes during weekday rush hours
 - Shady Grove Metro Station and Traville Transit Center termination points
- [Ride On extRa Lime Route](#): New high frequency limited stop service
 - Uses I-370 to provide express route to Rio, Crown Farm, and the Great Seneca Life Sciences Center
 - Runs every 15 minutes on weekdays
 - Shady Grove Metro Station and Traville Transit Center termination points
- [Route 12](#): Trip time adjustments for efficiency. Weekdays, Saturdays, and Sundays.
- [Route 13](#): Trip time adjustments for efficiency. Weekdays only.
- [Route 14](#): Trip time adjustments for efficiency. Weekdays and Saturdays only.
- [Route 16](#): Trip time adjustments for efficiency. Weekdays, Saturdays, and Sundays.
- [Route 19](#): Trip time adjustments for efficiency. Weekdays only.
- [Route 20](#): Trip time adjustments for efficiency. Weekdays, Saturdays, and Sundays.
- [Route 25](#): Trip time adjustments for efficiency. Weekdays only.
- [Route 43](#): Trip time adjustments for efficiency and some map changes. Weekdays, Saturdays, and Sundays.
 - Service added to Gaither Road west of Shady Grove Road.
 - Service to Adventist HealthCare Shady Grove Medical Center will be provided at the new Ride On extRa Pink Route stop at Shady Grove Medical Center South.
 - No Route 43 service on Shady Grove Road between Darnestown Road and Fallsgrove Boulevard.
- [Route 56](#): Slight routing changes with no map or timetable changes. Service to Adventist HealthCare Shady Grove Medical Center will be provided at the new Ride On extRa Pink Route stop at Shady Grove Medical Center South.
- [Route 57](#): Trip time adjustments and reduced trips for efficiency and improved on-time performance. Weekdays, Saturdays, and Sundays.
- [Route 58](#): Trip time adjustments and reduced trips for efficiency and improved on-time performance. Sundays only.
- [Route 61](#): Trip time adjustments and reduced trips for efficiency and improved on-time performance. Saturdays and Sundays only.
- [Route 63](#): Trip time adjustments for efficiency and some map changes. Weekdays only.
 - Route will no longer serve Gaither Road.
 - Buses will remain on Redland Road between the Shady Grove Metro Station and Piccard Drive.
- [Route 64](#): Trip time adjustments and reduced trips for efficiency and improved on-time performance. Saturdays and Sundays only.
- [Route 66](#): Trip time adjustments for efficiency and some map changes. Weekdays only.

- Service during a.m. & p.m. peak hours added to Gaither Road between Redland Boulevard and Piccard Drive, and on Piccard Drive between Gaither Road and Redland Boulevard. No midday service.
- Service on Redland Boulevard between Gaither Road and Piccard Drive discontinued, now served by Route 63.
- Service to Adventist HealthCare Shady Grove Medical Center will be provided at the new Ride On extRa Pink Route stop at Shady Grove Medical Center South.
- [Route 67](#): Trip time adjustments for efficiency. Weekdays only.
- [Route 73](#): Trip time adjustments for efficiency. Weekdays only.
- [Route 74](#): Trip time adjustments for efficiency. Weekdays only.
- [Route 75](#): Trip time adjustments for efficiency. Saturdays and Sundays only.
- [Route 83](#): Trip time adjustments for efficiency. Saturdays only.
- [Route 97](#): Trip time adjustments for efficiency. Saturdays and Sundays only.
- [Route 98](#): Trip time adjustments for efficiency. Saturdays only.
- [Route 100](#): Trip time adjustments for efficiency. Weekdays, Saturdays, and Sundays.
- [Route 101](#): Trip time adjustments for efficiency. Weekdays only.
- [Route 301](#): Slight routing changes with no map or timetable changes. Service to Adventist HealthCare Shady Grove Medical Center will be provided at the new Ride On extRa Pink Route stop at Shady Grove Medical Center South.

Ride On Trip Planner App Marks One Year, One Million Trips Planned



The Montgomery County Department of Transportation's (MCDOT) [Ride On Trip Planner](#) is celebrating one year, and more than one million public transit trips planned with the popular app. The app launched in the summer of 2023 to make planning public transportation easier and more convenient.

Ride On Trip Planner allows for trip planning across multiple modes including Montgomery County Ride On buses, Metrorail and Metrobuses, electric scooters and Bikeshare. Additionally, the app gives live reports on wait times and ridership levels for Ride On buses through a crowdsourcing information feature.

"We are building out a transportation network that incorporates faster, more frequent bus service, including express bus lines. Making our public transit system easy to navigate will encourage ridership," said County Executive Elrich. "Public transit is good for the environment, and it is good for health. It eliminates the need to find parking and deal with traffic congestion. We've begun adding dedicated lanes and traffic light priority which helps make the ride more efficient."

Through the app, residents can compare routes, estimated travel times and cost comparisons for suggested routes. It also provides features to guide riders along their chosen route, including "first mile, last mile" directions to a selected bus stop and sending push notifications to their mobile device when it is time to exit the bus.

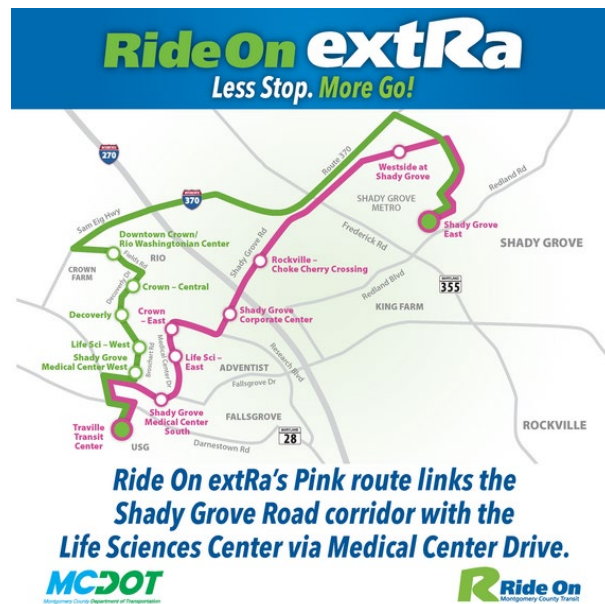
The app was created as a pilot project in partnership with [Moovit](#), a mobility and journey application provider. Riders can download the app from the [Google Play](#) or [Apple app](#) store. A [web-based version](#) of the app also is available.

"We have seen a steady increase in ridership on Ride On buses, and are currently at 89 percent of pre-pandemic ridership levels," said MCDOT Director Chris Conklin. "Last month we saw a 27 percent increase over last year and carried an average of 67,000 riders a day during weekdays. We are working to revolutionize public transit in Montgomery County through faster, more frequent bus service. If you haven't tried riding the bus lately, I encourage you to download the Ride On trip planner app and give it a try. With Wi-Fi and bike racks, our buses offer a hassle-free way to get around."

MCDOT recently completed a full-scale reassessment of the Ride On transit network. [Ride On Reimagined](#) proposes updated routes and bus services to improve and upgrade the County's transit system with more frequent and reliable service, better cross-county connections and more flexible service. MCDOT has advanced a number of initiatives in support of the program, including the [Flash Bus Rapid Transit Network](#), limited stop, express service line [Ride On extRa](#) and an expansion of [Flex](#), an on-demand bus service. MCDOT has also taken measures to improve the speed and reliability of bus services with the addition of red dedicated bus lanes and transit signal priority at intersections, through the [Bus Priority Project](#).

Learn more about the [Ride On Trip Planner](#) or download the app from the [Google Play](#) or [Apple app](#) store. A [web-based version](#) of the app also is available.

New Ride On extRa Great Seneca Transit Network Bus Routes Launching September 8



The new Ride On extRa Great Seneca Transit Network bus routes are launching September 8. This high frequency service which will bring fast, reliable access to medical centers, biotech companies, and educational facilities in the Life Science Center corridor. The new service will provide connections to 30% of the transit services network including the MTA buses, Metrobus, Metrorail, and 26 Ride On routes.

The Great Seneca Transit Network will include two new [Ride On extRa](#) bus routes. The two new Ride On extRa bus routes, designated as “Lime” and “Pink,” will run east-to-west connections between the Shady Grove Metro Station and the Universities at Shady Grove Rockville. The Pink route will link the busy Shady Grove corridor with the Life Sciences Center via Medical Center Drive. The Lime route will use I-370 to provide an express route to RIO, Crown Farm and the heart of the Life Science Center at Adventist Healthcare Shady Grove Medical Center.

Both bus routes will operate with sections of dedicated bus lanes and will have “traffic signal priority,” which gives a longer green light to the bus so bus riders can reach their destination faster. The bus schedule is designed to minimize wait times for riders, with service frequency every 10 to 15 minutes during peak hours on weekdays, and every 30 minutes on weekends. The two routes are expected to transport between four and five thousand riders each weekday. These new routes feature newly designed bus shelters providing weather protection, built-in lighting, real time information display, seating for two, bicycle securement, a trash can, and a lighted totem with a location specific map.

The Montgomery County Climate Action Plan has set a goal to eliminate greenhouse gas emissions by 2035. That includes all buses in the Ride On Fleet. Thirteen zero-emission buses

have been ordered for this service. Once they become available, the zero-emission buses will be placed in operation along these two corridors sometime during calendar year 2025. The new buses also will have the upgraded amenities associated with Ride On extRa branded buses such as extra padding on seats, low floor boarding, free wi-fi access, USB charging ports, and information displays.

The GSTN was planned with input from residents, businesses, and educational institutions. The express routes will provide needed access to education and healthcare for residents, essential workers, and students.

A Ride On Guide to Montgomery County Shopping Centers



As the dog days of summer drag on, the start of the 2024-2025 school year is just beginning. Get prepared for your child to return to the classroom by stocking up on all the essentials. From clothing to school supplies, this list has you covered with local shopping centers and malls that can be accessed by Ride On routes.

- [Rockville Town Square](#): Located in the center of Rockville, this open-air shopping center includes clothing stores, groceries, and even a public library to check out those last-minute summer reading books. Take Ride On Route [45](#) to Rockville Town Square to visit this collection of vendors.
- [Westfield Wheaton Mall](#): This Wheaton mall has everything you need to get geared up for the new year. Stop in for new shoes, clothing, school supplies, and more. Westfield Wheaton is located directly across from the Wheaton Metro station; take Ride On routes [4](#), [7](#), [8](#), [9](#), [34](#), [37](#), [38](#), or [48](#) to get here.

- **Gaithersburg Square:** Located on Frederick Avenue, Gaithersburg Square has some favorite discount retailers to get your kids looking their best for less! This shopping center also houses beauty service providers to get in that last minute haircut or manicure. To visit Gaithersburg Square, take Ride On routes [54](#), [55](#), [59](#), or [61](#).
- **Rio:** The Rio shopping center is a lakeside outdoor mall that includes locations of some of your favorite big box retailers, boutique clothing stores, eateries, and key services like eyewear and grooming. Take a break from the back-to-school hustle and bustle and catch a movie or grab dinner with the family while you're there. Ride On routes [54](#) and [74](#) will take you directly to the Rio. If traveling on or after September 8, try the new Lime extRa route to get to the Rio fast!
- **Westfield Montgomery Mall:** Located in Bethesda, Westfield Montgomery Mall has all your kids' favorite places to shop. Make it a family day with a movie, meal, or one of many activities in and around the mall. Ride On routes [6](#), [26](#), [42](#), [47](#), and [96](#) serve Westfield Montgomery.

Interview with Transit Advisory Group Member Teddy Frederick



How long have you been riding with Ride On and what year did you begin?

I have been riding with Ride On to some extent for about 7 or 8 years, since 2016 or 2017.

Why did you start riding Ride On?

I originally started riding whenever my parents didn't want to bother taking a car somewhere. But as I have begun to ride on my own, I find Ride On useful because, as I do not have a car, it is the best way for me to get around independently.

What routes do you ride the most and for what reasons?

I ride the 47 the most because it is the closest to my house, it is easy to access Downtown Bethesda and the Metro, and it actually runs on weekends.

What do you like the most about riding with Ride On?

My favorite thing about riding with Ride On is that it allows me to get around cheaply and on my own, while helping the environment.

How do you view your role as a Ride On Transit Advisory Group (TAG) member?

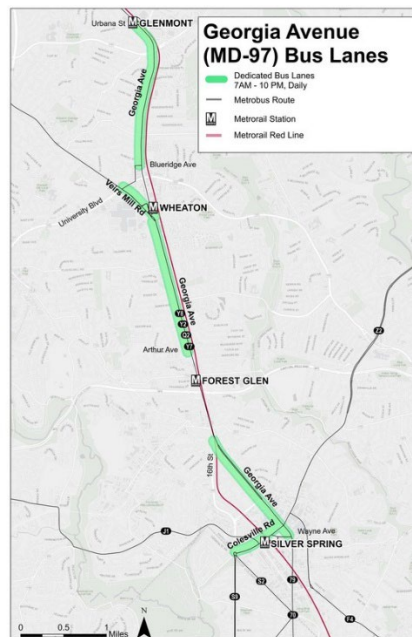
I view it as a hopefully important position that will allow me to better understand how decisions related to Ride On are made and share my thoughts about them.

How likely are you to recommend Ride On to someone else?

If it was convenient to their situation, I would definitely recommend that others should take Ride On, especially as opposed to a car.

The Transit Advisory Group is actively recruiting new members! If you or someone you know is interested, especially those who are disabled, high school students or bilingual, please visit our TAG webpage [here](#) to apply to be a member. Your membership is free, and you will have a chance to make a difference within Montgomery County. Let your voice be heard!!

Metro, Montgomery County, and Maryland Departments of Transportation Agree to Extend Bus Lane Pilot



Almost seven miles of bus-only lanes on state roads within Montgomery County will stay in place through at least December as part of an extended pilot project agreement among the Maryland and Montgomery County Departments of Transportation, and Metro.

The bus-only lanes along Georgia Avenue and Colesville Road were installed this summer to help move shuttle bus customers along faster during the Red Line construction work. More than a million transit customer trips benefited from faster travel times or improved reliability since the bus lanes were implemented, which provided a viable alternative to driving during the Metro shutdown and offset CO2 emissions.

Metro closed a section of the Red Line to allow construction crews to build connections with the Maryland Transit Administration's Purple Line light rail project. Metro also performed maintenance and station upgrades at the Glenmont, Wheaton, Forest Glen, Silver Spring, and Takoma Metro stations. The stations are re-opening on time on Sunday, Sept. 1.

While the shuttle operation will end on Aug. 31, several Metrobus and Ride On bus routes, including the Metrobus Y and Q routes, will still benefit from the lanes. The temporary lanes are in effect daily from 7 a.m. to 10 p.m.

Metro, the Maryland Department of Transportation State Highway Administration (MDOT SHA), and the Montgomery County Department of Transportation will continue to evaluate the success of the lanes, working collaboratively to alleviate congestion and speed up buses.

"The Moore-Miller Administration is focused on moving people not just vehicles and by continuing to study these temporary bus lanes, we are showing our commitment to providing a safe, equitable transportation system for all users," said Maryland Transportation Secretary Paul J. Wiedefeld. "These temporary bus lanes are a successful collaboration between the Maryland Department of Transportation, Montgomery County, and Metro and highlight a low-cost project that has a high impact on the communities it serves. Extending the pilot through the end of the year will allow us to evaluate the project's effectiveness and examine opportunities to speed up buses through additional targeted bus lane improvements in Maryland."

More than 15,000 average daily riders use the Metrobus and Ride On routes on Georgia Avenue and Colesville Road.

"I appreciate the extension of the pilot project to allow us to explore options for improved and more equitable access along this corridor," said Montgomery County Executive Marc Elrich. "Bus lanes across the region have increased reliability and decreased travel time for bus passengers. We want to improve the service for our existing riders – many of whom are low income, low English proficiency, or have disabilities – and demonstrate to potential new riders that the bus can be an attractive transportation option."

"We are thankful for the collaboration with Maryland and Montgomery County," said Metro General Manager Randy Clarke. "Dedicated bus lanes are one of the best tools to move many people through a corridor quickly. We are excited to see the results of this pilot and are encouraged by Maryland's efforts to increase bus speeds."

With dedicated lanes, buses don't get stuck behind other traffic. This summer local bus service moved the fastest it ever has, despite additional bus volumes with the shuttle buses. Meanwhile, travel times for drivers in the corridor remained constant.

During the fall, MDOT and Montgomery County DOT will analyze data and make changes to the lanes to make them more efficient. They will also review how dedicating travel lanes to buses affects traffic when schools are in session and the region's workers are back from summer travels.

Dedicated bus lanes are the most efficient use of existing roadway space, moving the greatest number of people in a bus in the least amount of space (compared to single occupancy vehicles). It's also a safer and low-cost way of moving more people through a corridor without widening roads.

The successful implementation of the temporary bus lanes is a testament to the teamwork and partnership between the Maryland and Montgomery County Departments of Transportation and Metro.

This pilot extension is a regional effort by transportation departments to advance faster, more convenient bus service in the Washington metro area.

New Fairfax Connector Route 798 Express Bus Service From Tysons to Bethesda Coming Soon



Montgomery County Department of Transportation (MCDOT) is partnering with Fairfax County to bring the new Fairfax Connector express bus service to Montgomery County.

The Route 798 express bus service is a commuter bus which will operate from Tysons, Virginia to Bethesda, Maryland, including stops at the Medical Center Metro Station (servicing the National Institutes of Health (NIH) and the Walter Reed Bethesda National Medical Center), the Bethesda Metro station, and the Westfield Montgomery Mall Transit Center. This Fairfax County Connector route is a convenient, efficient, and eco-friendly transportation option for those commuting between Northern Virginia and Montgomery County. The route offers comfortable seating and USB charging ports, allowing riders to relax and turn their focus away from traffic during their commute.

This new service, slated to launch September 2024, will run Monday - Friday during peak hours. The one-way fare is \$4.80, and transfers from Ride On will benefit from a \$1.00 discount. "Free Ride" coupons will also be available during the launch to allow riders to try the service for free.

Ride On Bus Operator Takes Lifesaving Measures to Save Life of Rider

On Thursday, August 8, a passenger was experiencing a drug overdose on a Ride On bus. She was given NARCAN by another passenger, however, she was still not breathing. Bus Operator Luis Reyes Flores called Ride On's Central Communications, which monitors the operations of each bus, who directed him to call 911. He gave the 911 operator the vital information needed to save her life and followed the instructions of the 911 operator by placing the passenger on her back on the floor of the bus and performing life-saving CPR until the paramedics arrived. Mr. Flores received a statement of Commendation from Chris Conklin, Director of Montgomery County Department of Transportation.

Here is an interview with Mr. Flores about the incident.



What is your name?

Luis Reyes Flores

How long have you been working with Ride On?

I have worked with Ride On for 8 years.

How did it make you feel knowing you saved someone's life?

I am glad and relieved that the passenger was okay. I just feel that I was blessed to be one part of the team that was able to assist in saving this women's life.

Can you describe the incident on the bus?

A passenger informed me that a woman was unresponsive and appeared not to be breathing. I immediately stopped the bus and called 911 so we could get medical assistance as soon as possible. After the 911 operator ensured me that medical assistance was on the way, she walked me through chest compressions (CPR). As I was performing CPR, the passenger was coming in and out of consciousness. The medics arrived on scene and took over. At that point I notified Central Communication so a coordinator could come on scene.

What is a positive message you would like to share with everyone?

Put your hands on God's praise so you can be prepared to deal with the unknown.

What has Ride On done for you and your family?

It has provided a stable income and job security for myself and my family.

What do you like most about being a transit operator?

Although at times it is challenging to deal with the general public, the majority of the time we get to assist and help people, which helps me to feel good. Also, we provide an important service to the community.

What lesson(s) has been a bus operator taught you?

It has taught me to be patient and keep an open mind when assisting the public.

**The Great Seneca Transit Network Ride On extRa Routes:
Enhancing Community Connection and Economic Growth**



The Great Seneca Transit Network (GSTN) is an initiative designed to connect vital communities across Montgomery County while supporting development in key job sectors such as biotech, education, and healthcare. As part of this initiative, the GSTN introduces innovative infrastructure that enhances the commuting experience and contributes to the county's commitment to sustainable and efficient transit solutions.

The new Great Seneca Transit Network, Pink and Lime bus routes will begin service on Sunday, September 8. These two high-frequency limited stop bus routes will provide service between Shady Grove Metro and the Universities at Shady Grove/Traville Gateway Transit Center with stops along the way. **The fare is \$1**, as are all County buses.

[Ride On extRa Pink Route](#): New high-frequency limited stop service.

- Shady Grove Metro Station and Traville Transit Center termination points
- Links the Shady Grove Road corridor with the Life Sciences Center via Shady Grove Road and Medical Center Drive.
- Runs every 10-12 minutes during weekday rush hours, from 6-9 a.m. and 3:30-6:30 p.m. Off-peak weekday service runs every 15 minutes. Runs every 30 minutes on weekends.

[Ride On extRa Lime Route](#): New high-frequency limited stop service.

- Shady Grove Metro Station and Traville Transit Center termination points.
- Uses I-370 to provide an express route to Rio, Crown Farm, and the Great Seneca Life Sciences Center.
- Runs every 15 minutes all day on weekdays. Runs every 30 minutes on weekends.

Current riders and potential new riders should know the closest bus stop to their place of employment as well as the benefits (impacts) of public transit.

Community Impact

Universities of Shady Grove, Montgomery College Community

- **Enhanced Student Access:** Improved transportation for students, faculty, and staff has made commuting to campus easier and more reliable.
- **Expanded Enrollment Opportunities:** Easier access for prospective students from surrounding areas, potentially increasing enrollment.
- **Support for Research Collaboration:** Facilitates easier movement for research collaborations with other institutions and organizations.

- **Community Engagement:** Strengthens the university's connection to the local community through improved accessibility.

Shady Grove Adventist Hospital Community

- **Patient Accessibility:** Easier access to healthcare facilities for patients, especially those without private transportation.
- **Employee Commute:** Provides a reliable and affordable commuting option for hospital staff, reducing lateness and absenteeism.
- **Visitor Convenience:** Facilitates visitation for families and friends of patients, improving overall patient care experience.

Biotechnology and Life Sciences Community

- **Employee Commute:** Improved access to workplaces for employees, enhancing punctuality and reducing stress.
- **Attracting Talent:** Easier recruitment of talent from a broader geographic area due to improved transportation links.
- **Collaboration and Networking:** Facilitates movement between companies, universities, and research institutions, fostering collaboration.
- **Corporate Responsibility:** Demonstrates commitment to sustainability and community well-being by supporting public transportation initiatives.
- **Business Growth:** Potential to attract more clients and partners to the area, boosting business opportunities.

Retail Business Community

- **Increased Foot Traffic:** Improved accessibility leading to increased customer visits and sales.
- **Customer Convenience:** Easier access for shoppers, especially those relying on public transport.
- **Employee Accessibility:** Reliable commute options for employees, reducing turnover and increasing job satisfaction.
- **Community Integration:** Strengthens the business's presence and connection within the community.

Commercial Real Estate Community

- **Boosted Traffic:** Increased accessibility leading to higher foot traffic and more shoppers.

- **Tenant Attraction:** Attracts new tenants looking for locations with good public transport links.
- **Community Hub:** Position the shopping center as a central hub for community activities and events.
- **Economic Impact:** Potential for increased sales and revenue for tenants, contributing to the overall economic health of the area.
- **Sustainability and Innovation:** Showcase the shopping center's commitment to sustainability and modern infrastructure.

General Community

- **Reduced Traffic Congestion:** Less traffic on major roads, making commuting easier for everyone.
- **Environmental Impact:** Decreased carbon footprint with more people using public transport.
- **Improved Connectivity:** Easier access to other parts of the city and neighboring communities, promoting regional integration.
- **Enhanced Property Values:** Potential for increased property values and new business investments in the area.
- **Inclusive Mobility:** Increased mobility options for those without cars, including seniors, students, and low-income residents.
- **Public Health:** Promoting walking and reduced vehicle emissions contributing to better air quality and public health.
- **Sustainability Initiatives:** Supports the university's sustainability goals by promoting the use of public transportation.

The Great Seneca Transit Network comprises of 24 strategically located bus stops that are designed to serve high-frequency routes along the new Lime and Pink routes. These routes will overlap with existing Ride On routes 43, 63, and 66, providing seamless connections and expanded transit options for riders. The new routes will offer faster service during weekday peak hours and extended service on weekends, catering to the growing demands of Montgomery County's thriving communities.

Know Your Bus Stop

Station Location & Nearest Intersection	Station Name	Nearby Organizations
FIELDS RD AT RIO BLVD (NB)	Downtown Crown/Rio Washingtonian Center	Kohls, Target
FIELDS RD AT RIO BLVD (SB)	Downtown Crown/Rio Washingtonian Center	Navy Federal Credit Union
DISCOVERLY DR AT CROWN PARK AVE (NB)	Crown - Central	Multiple Residential Properties
DISCOVERLY DR AT CROWN PARK AVE (SB)	Crown - Central	Multiple Residential Properties
DIAMOND DR AT DISCOVERLY DR (SB)	Discoverly	FINRA & Residential Properties
BROSCART RD AT MEDICAL CENTER WAY (NB)	Shady Grove Medical Center - West	Katherine Thomas School, Emergent
TRAVILLE TRANSIT CENTER UNIVERSITY OF SHADY GROVE (NB)	Traville Transit Center/USG	Giant Food, Dunkin Donuts
SHADY GROVE RD AT CORPORATE BLVD (NB)	Shady Grove Corporate Center	Mariotti, Strayer College, Children's National
SHADY GROVE RD AT CRABBS BRANCH WAY (NB)	Westside at Shady Grove	MCPS Bus Depot
SHADY GROVE RD AT CRABBS BRANCH WAY (SB)	Westside at Shady Grove	Giant Food, Ride On Gaithersburg Depot
DIAMOND DR AT DISCOVERLY DR (NB)	Discoverly	FINRA & Residential Properties
BROSCART RD AT BLACKWELL ROAD (NB)	Life Sci - West	Alexandria Center for Life Sciences
BROSCART RD AT BLACKWELL ROAD (SB)	Life Sci - West	Immunomic
BROSCART RD AT MEDICAL CENTER WAY (SB)	Shady Grove Medical Center - West	Adenist Healthcare Shady Grove Med Ctr
SHADY GROVE RD AT CHOKE CHERRY RD (NB)	Rockville - Choke Cherry Crossing	CVS, Mom's, Shelada
SHADY GROVE RD AT CHOKE CHERRY RD (SB)	Rockville - Choke Cherry Crossing	Home Depot, Best Buy, Norstrom Rack, Men's Wearhouse
SHADY GROVE RD AT CORPORATE BLVD (SB)	Shady Grove Corporate Center	Montgomery College Administrative Offices
OMEGA DR AT RESEARCH BLVD (NB)	Crown - East	Multiple Residential Properties
OMEGA DR AT RESEARCH BLVD (SB)	Crown East	Extended Stay Hotel
MEDICAL CENTER DR AT BLACKWELL ROAD (NB)	Life Sci - East	RegenxBio, Glyco Mimetics
MEDICAL CENTER DR AT BLACKWELL ROAD (SB)	Life Sci - East	National Cancer Institute, Hospital Entrances
MEDICAL CENTER DR AT MEDICAL CENTER WAY (NB)	Shady Grove Medical Center - South	MacroGenics, Hospital Main Entrance
MEDICAL CENTER DR AT MEDICAL CENTER WAY (SB)	Shady Grove Medical Center - South	Aquilino Cancer Center, Lanzo, Hansoh
NO SHELTER HERE	Shady Grove Metro Station	

Overall, the Great Seneca Transit Network represents a major step forward in Montgomery County's commitment to providing quality, environmentally friendly public transportation. Whether you're commuting to work, heading to school, or exploring the county's vibrant communities, the GSTN is set to make your journey more convenient and enjoyable.

Of Note

Ride On Courtesy Stop Program

Montgomery County Ride On bus riders are now able to request to be dropped off between stops when traveling late at night. Available after 9 p.m., the Courtesy Stop program lets riders request to be dropped off at any point along the regular bus route, in addition to designated bus stops. Riders can request a Courtesy Stop on any MCDOT Ride On bus or WMATA Metrobus. However, Metrobus Express and Limited Stop buses, such as Flash, operating in Montgomery County, are excluded from the program. The requested stop must be along the regular bus route, and cannot be at an intersection, along a highway or freeway. A bus operator can refuse a requested stop if the driver deems the undesignated stop as unsafe.

Connect With Ride On

Are you following Ride On's social media accounts yet? Ride On communicates and connects to our riders using [Instagram](#), [X](#), [Facebook](#), [YouTube](#), and [Threads](#). Our social media presence allows us to share exciting news and new programs as well as keep riders up to date on any detours, stop changes, or construction impacting our routes. On our Instagram account you can find interviews with riders and operators, featured trips to locations on Ride On routes, and regular service updates. Find us at @RideOnMCT on your favorite social media platform.

We also communicate with customers directly through our email and text subscription service. Subscribing to these alerts means you'll get the latest Ride On service and program information sent straight to your inbox. To subscribe, visit www.montgomerycountymd.gov/govdelivery, or text MONTGOMERY RIDEON to 468311 to receive text alerts.

Free Rides for those 65+ with the Senior SmarTrip Card

As part of Metro's ongoing commitment to expand access and affordability to public transit, the Senior SmarTrip program has joined all other Metro reduced fare programs in offering SmarTrip cards at no additional cost as of January 16, 2024. Senior SmarTrip cards are available at all County libraries, TRiPS stores, and the County Treasury office in Rockville. Please bring a proof of age. Get yours and ride free on all Ride On buses and most Metrobuses in the County, and ride for "half price" on Metrorail and Metrobuses outside the County

Download the Ride On Trip Planner App

Have you downloaded the Ride On Trip Planner App yet? This new, innovative app allows riders to plan their next trip and to tell how crowded a Ride On bus is – before it arrives – with the crowdedness indicator on the app. Riders can choose if they want to get on the arriving bus, wait for the next bus depending on how many people are on the bus, or choose another travel option, such as other local transit services, bikeshare, and scooter. It gives riders more control over their transportation experience. The Ride On Trip Planner app is easy to use and can be downloaded from the Google Play or Apple app store, or accessed with our desktop version.

Transit Trivia!

Test your familiarity with Ride On's routes, services, and more with our transit trivia! The answer will be in next month's edition of our newsletter so make sure you tune in next month to see if you answered correctly!

Question:

What 2 new Ride On extRa routes are launching in September?

1. Pink and Lime
2. Blue and Lime
3. Pink and Yellow
4. Lime and Yellow

Last month's question:

Question:

What environmentally friendly initiative has Ride On committed to achieving by 2035?

1. Solar powered bus stops
2. Zero emissions fleet
3. Increasing routes
4. Hybrid buses

Answer: (2) Zero emissions fleet

For the most up-to-date service information, riders should follow @RideOnMCT on [X](#), [Facebook](#), [YouTube](#), and [Instagram](#). In addition, information is available at [RideOnBus.com](#), by subscribing to receive email alerts at [www.montgomerycountymd.gov/govdelivery](#), or texting MONTGOMERY RIDEON to 468311 to receive text alerts.

For information on MCDOT programs and services visit [montgomerycountymd.gov/mcdot](#), follow @MCDOTNow on [X](#), [Facebook](#) and [Instagram](#) and [subscribe](#) to MCDOT's "Go Montgomery!" newsletter.

If you need an Americans with Disabilities Act (ADA) reasonable accommodation to access Ride On bus service, contact MC311 by voice at 240-777-0311, by email RideOn.CustomerService@montgomerycountymd.gov or TTY 711.

Title VI: Montgomery County assures that no person shall, on the grounds of race, color, or national origin, as provided by Title VI of the Civil Rights Act of 1964 and the Civil Rights Act of 1987, be excluded from the participation in, be denied the benefits of, or be otherwise subjected to discrimination under any program or activity.